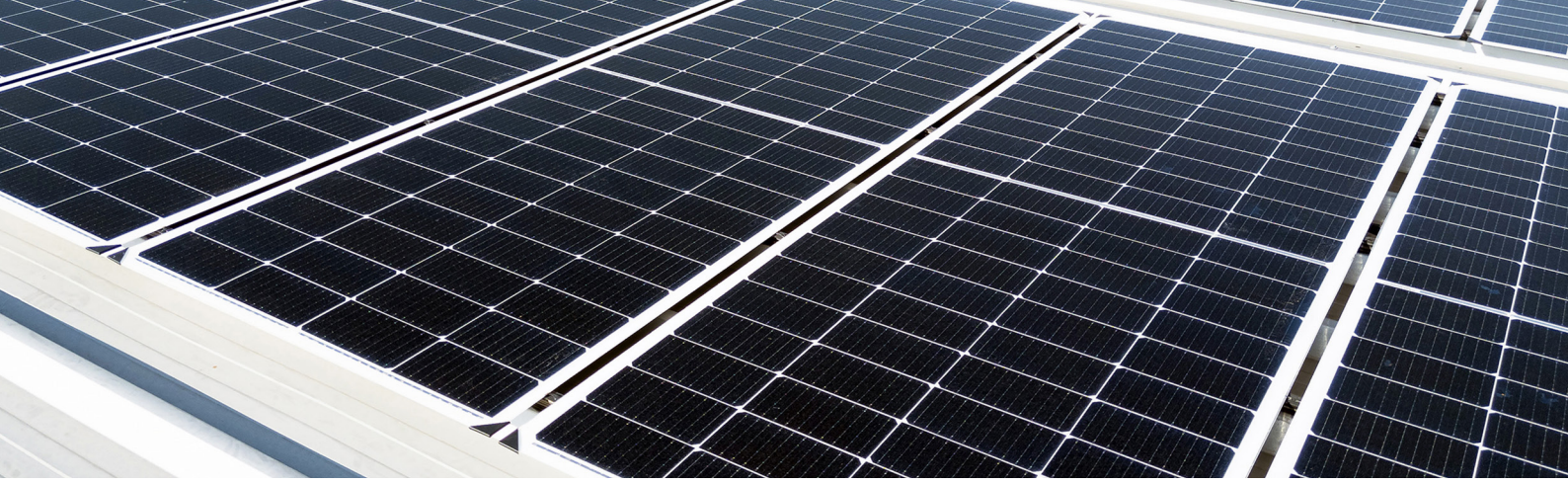


ALSPEC SOLAR

COMMERCIAL / INDUSTRIAL / RESIDENTIAL SOLAR SOLUTIONS





Alspec Solar

Alspec Solar represents the newest venture under the Alspec Group, a company distinctly Australian in ownership and operation. Renowned as an industry leader in aluminium building systems, Alspec has established itself as a critical player in the aluminium value chain in Australia, a sector integral to global efforts in reducing emissions. Our commitment to sustainability is not just a part of our business—it's at its core.

With the introduction of Alspec Solar, we reaffirm our unwavering commitment to environmental stewardship and innovation. Our objective is bold yet clear: to revolutionise the building integrated renewable energy domain in Australia.

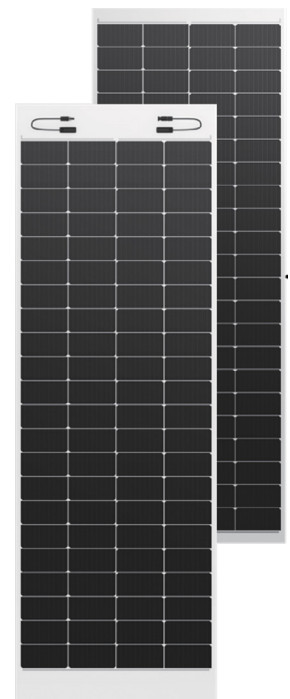
By harnessing our advanced solar BIPV (Building Integrated Photovoltaic) technology, Alspec Solar is an extension of our enduring dedication to innovation in the building and construction sector. We are at the forefront, crafting a future where environmental responsibility seamlessly integrates with business growth, leading to a more sustainable built environment in Australia for generations to come.

Our Range:

Galaxy Series 315W/335W

- Non-penetration
- 60% lighter than conventional modules at 5.6kg/m²
- Made to Last - UV resistant, enhanced impact resistance, self-cleaning
- Solid and stronger - ultra-thin tempered glass
- Adaptive to multiple scenarios and roof surfaces
- Longer efficiency guaranteed in 30 years

Galaxy Series is a featherlight BIPV product designed for industrial, commercial and residential applications. With an ultra-lightweight design and frameless surface, Galaxy is ideal for low load-bearing and poor waterproofing roofs while ensuring power generation efficiency. The 1.6mm ultra-thin glass added to Galaxy greatly helps its ability to resist strong impacts from hail and high wind, bringing durability and safety to buildings with all-weather protection. Furthermore, the integrated design enables rapid and streamlined installation, resulting in significant cost savings from reduced labour time.

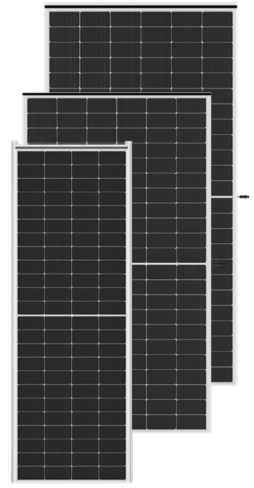


COMMERCIAL, INDUSTRIAL,
RESIDENTIAL

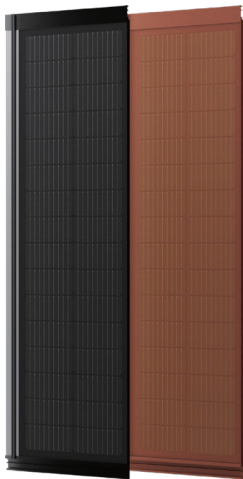
Polaris Series 505W/550W

- Reinforced double glass, strong impact resistance
- Diverse integration applications
- Structural waterproofing and cooling
- Modular quick installation
- 2+2 mm reinforced glass
- High-efficiency Mono PERC cells

Polaris Series allows you to easily adapt existing structures such as carports or flat-to-sloping roofs into solar structures. Double-chamber design ensures structurally stronger frames. Modular installation technology and integrated drainage structure allows for easy installation while providing comprehensive performance and advantages in safety, applicability, durability, price and environmental friendliness.



COMMERCIAL, INDUSTRIAL,
RESIDENTIAL



Sunshine Series 84W/92W

- Attractive appearance with traditional tile compatibility
- Rapid/Non-penetrative installation
- Class A Fire Rating
- Hurricane Wind-Resistance
- Structural Waterproofing

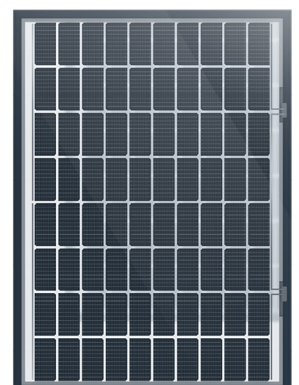
Sunshine Series is an integrated solar roof tile solution for pitched rooftops to replace traditional solar panels and framework for a sleek, aesthetically-pleasing result. It also maximises your rooftop space for more solar production. The integrated, tempered, double-glass structure ensures the safety of the roof structure. Featuring improved roof ventilation and heat dissipation, as well as fast installation, the Sunshine tiles can not only improve solar power generation efficiency, but also help households lower energy costs while reducing their overall carbon footprint.

RESIDENTIAL

StarLux 275W

- Transparent product with 10-18% translucency
- Structured drainage design
- Bi-facial glass 6+6mm clear tempered glass
- Atmospheric design
- All-in-one Alspec patented system

The Starlux series is an integrated glazed panel PV, the perfect choice for a patio system, corridor area in a home or a glass house. By integrating PV modules into the roof of the sunroom using BIPV technology, we achieve an optimal balance between comfort and health, as well as energy efficiency and environmental sustainability.



RESIDENTIAL

Scan to contact



3 Alspec Place
Eastern Creek NSW 2766
Email: info@alspecsolar.com.au

alspecsolar.com.au

